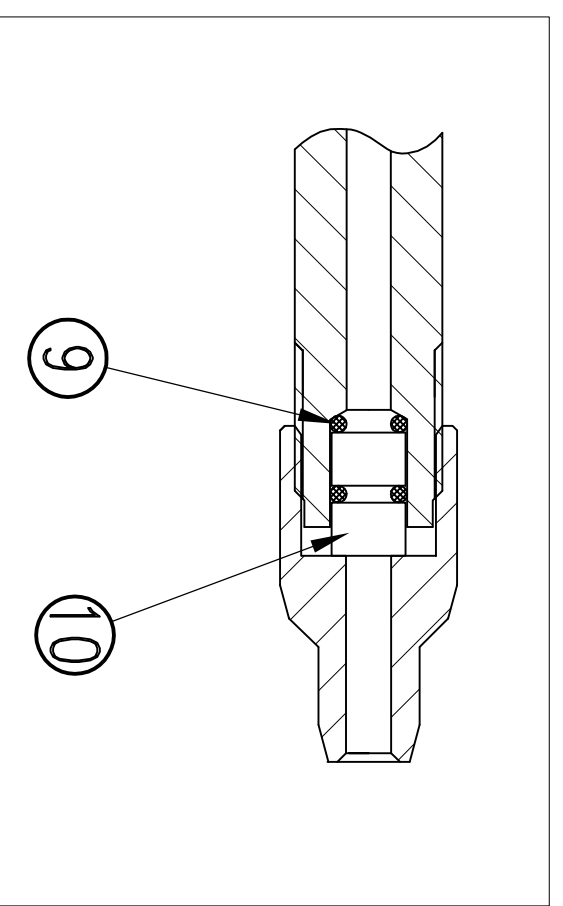
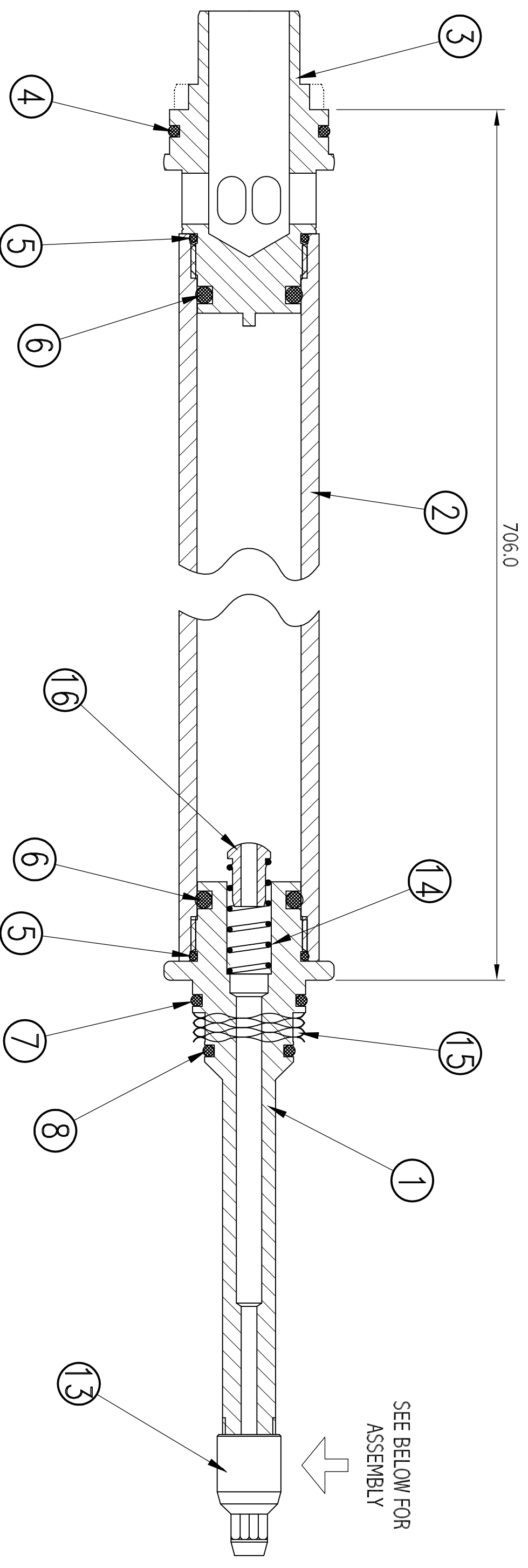


ISSUE	REVISION DETAILS	DRAWN	CAR No	CHECKED	DATE
01	NEW DRAWING	LKP			25.07.05
02	BLANKING PLUG DETAIL REMOVED (ITEMS 11 & 12)	LKP	1507		27.02.07
03	GLAND NUT MATERIAL CHANGED, NOW ORDINARY ST. ST.	LKP	1522		24.04.07



ITEM	PART No.	DESCRIPTION	QTY
01	5-819/05	CAPSULE REAR CAP	1
02	5-658/04	CAPSULE BODY	1
03	5-819/06	CAPSULE FRONT CAP	1
04	3-00/201	'O' RING BS 826 NITRILE	1
05	3-00/186	'O' RING BS 123 NITRILE	2
06	3-00/187	'O' RING BS 316 NITRILE	2
07	3-00/468	'O' RING BS 216 NITRILE	1
08	3-00/384	'O' RING BS 211 NITRILE	1
09	3-00/001	'O' RING BS008 EPDM	2
10	5-643/05/02	WIRE LINE SPACER	2
13	5-387/09/01	GLAND NUT	1
14	3-12/026	SS SPRING D22460	1
15	3-12/031	WAVE SPRING YC13742 S17	1
16	5-821/10	SPRING END	1

GENERAL TOLERANCES UNLESS OTHERWISE SPECIFIED:		SCALE	NTS	DRAWN SIZE	A3	HEAT TREATMENT	ASSEMBLY	3 5/8" NON MAG. STEERING TOOL HOUSING
FABRICATION	±1 mm	DRAWN	LKP	THIRD ANGLE PROJECTION			TITLE	CAPSULE ASSEMBLY
MACHINING	±0.25(0.010)	CHECKED		MATERIAL		FINISH	DRAWING No	5-819-07
SURFACE FINISH	3.2 micron	DATE	25-07-2005				PART No	5-819/07

This Drawing is released on the understanding that the Copyright holders proprietary rights therein are recognised and that it is solely for the information of the recipient and must not be copied in whole or in part or disclosed to any third party or used as the basis for manufacture or sale of apparatus without the prior written permission of R. C. Brewis.

BREWIS ENGINEERING
Design and Manufacturing
Handmaker Road
Marston Trading Estate
Frome Somerset BA11 4RW
Tel 01373 451387
Fax 01373 452714