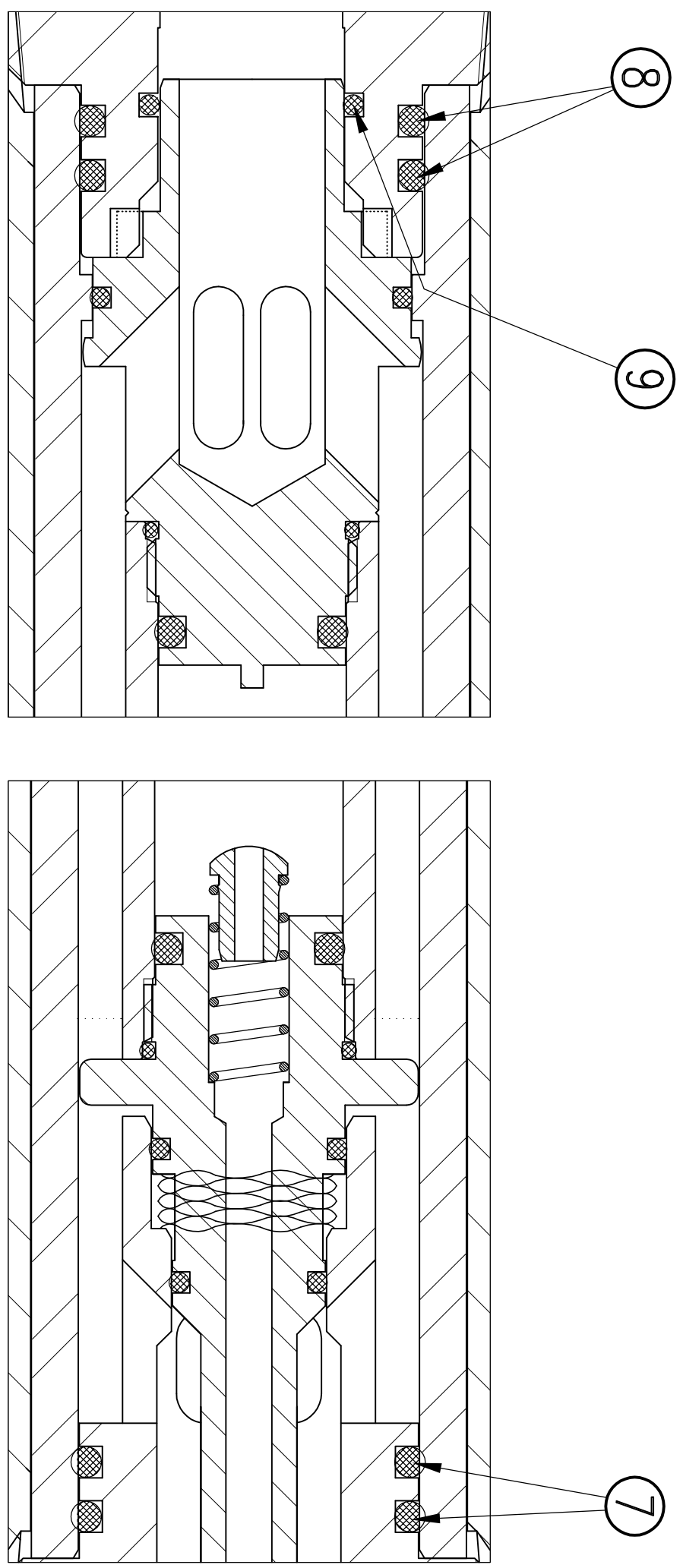
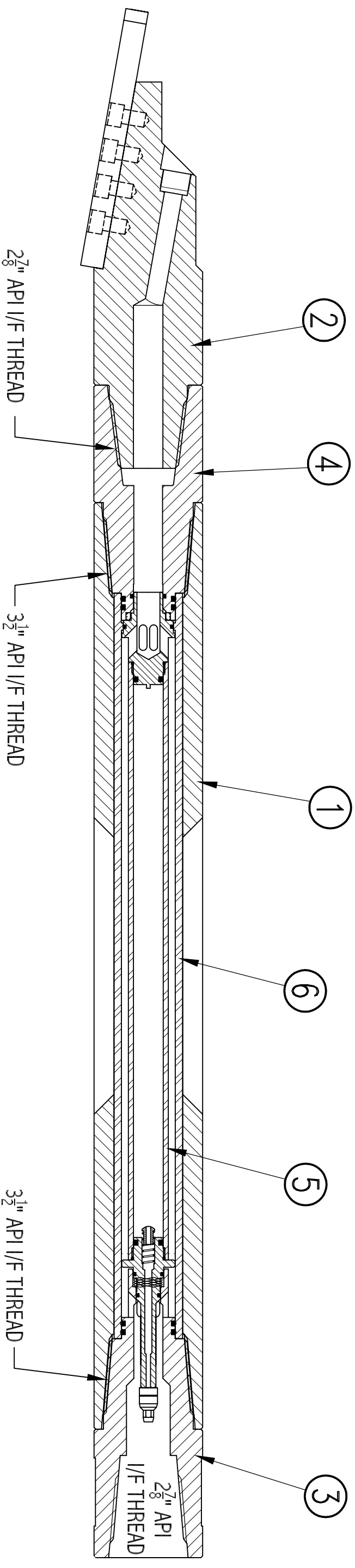


ISSUE	REVISION DETAILS	DRAWN	CAR No	CHECKED	DATE
01	NEW DRAWING	LKP			09.05.05
02	CHANGES TO CAPSULE REAR CAP & REAR CAP	LKP			08.06.05
03	OVERALL LENGTH INCREASED	LKP			14.12.05
04	CHANGES TO REAR CAP BORE	LKP			14.12.05



ITEM	PART No.	DESCRIPTION	QTY
01	5-802/01	BODY	1
02	5-802/15	HEAD ASSEMBLY	1
03	5-802/03	REAR CAP	1
04	5-802/02	FRONT CAP	1
05	5-802/07	CAPSULE ASSEMBLY	1
06	5-802/08	BODY LINER	1
07	3-00/145	O' RING BS 327 NITRILE	2
08	3-00/145	O' RING BS 327 NITRILE	2
09	3-00/464	O' RING Ø4 x 31 I/D NITRILE	1

GENERAL TOLERANCES
UNLESS OTHERWISE SPECIFIED:
FABRICATION ±1 mm
MACHINING ±0.25(0.010)
SURFACE FINISH 3.2 micron

SCALE NTS
DRAWN LKP
CHECKED
DATE 09-05-2005

DRAWN SIZE A3
THIRD ANGLE PROJECTION

HEAT TREATMENT
FINISH

ASSEMBLY 4 3/4" NON MAG. S.T.H. WITH WAVE SPRING
TITLE GENERAL ASSEMBLY
DRAWING No 5-802
PART No 5-802

This Drawing is released on the understanding that the Copyright holders proprietary rights therein are recognised and that it is solely for the information of the recipient and must not be copied in whole or in part or disclosed to any third party or used as the basis for manufacture or sale of apparatus without the prior written permission of R. C. Brewis.

BREWIS ENGINEERING
Design and Manufacturing
Handmaker Road
Marston Trading Estate
Frome Somerset BA11 4RW
Tel 01373 451387
Fax 01373 452714