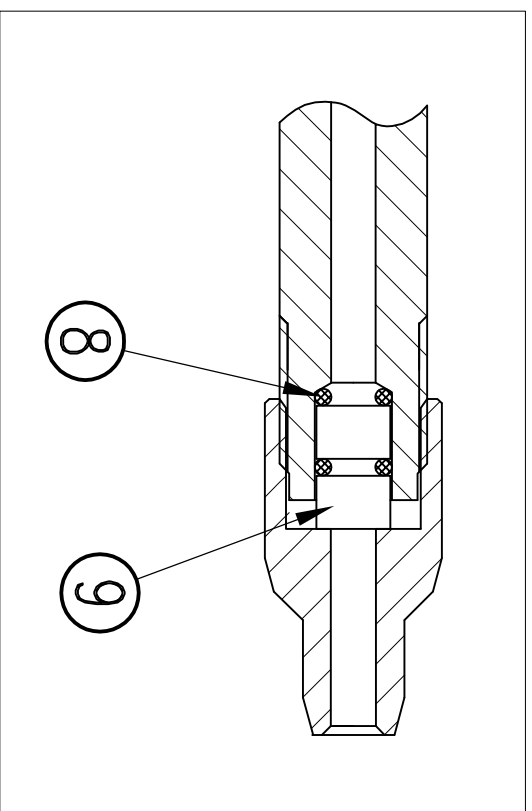
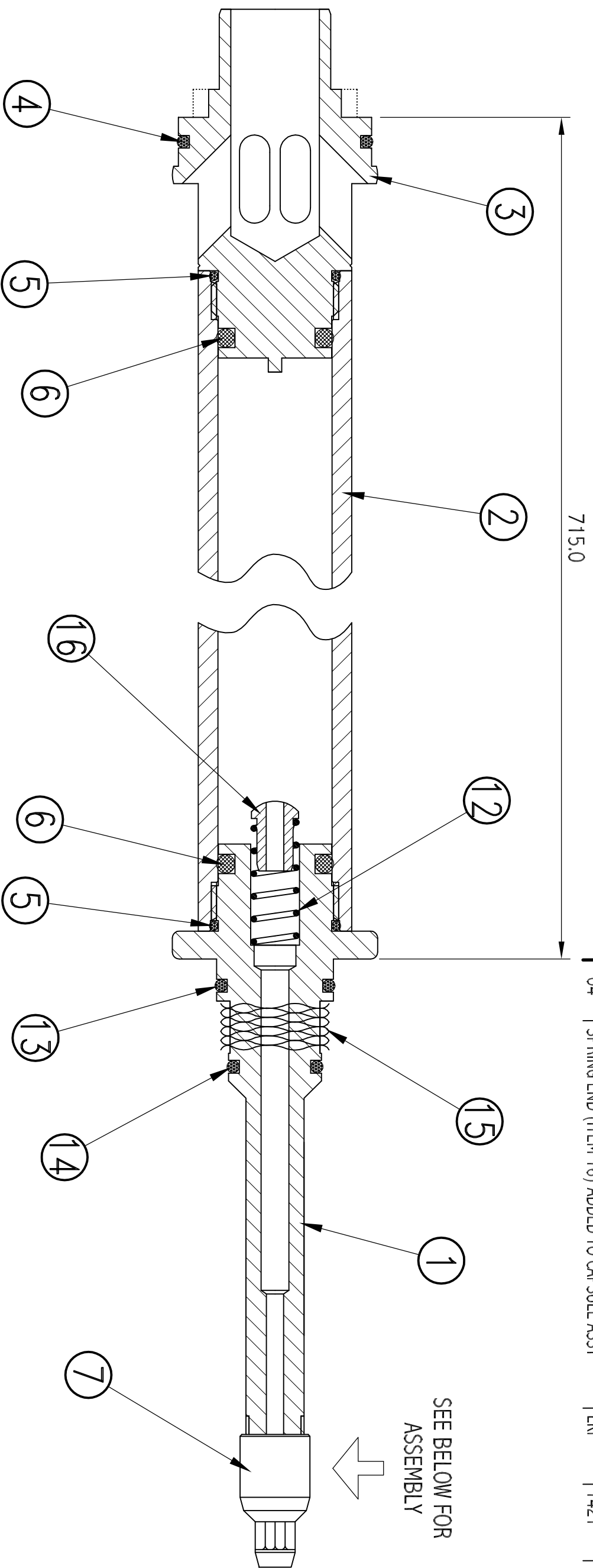


ISSUE	REVISION DETAILS	DRAWN	CAR No	CHECKED	DATE
05	BLANKING PLUG DETAIL REMOVED (ITEMS 10 & 11)	LKP	1507		27.02.07
06	GLAND NUT MATERIAL CHANGED, NOW ORDINARY ST. ST.	LKP	1522		24.04.07

ISSUE	REVISION DETAILS	DRAWN	CAR No	CHECKED	DATE
01	NEW DRAWING	LKP			09.05.05
02	CHANGES TO CAPSULE REAR CAP (SEE 5-802-05)	LKP			08.06.05
03	CHANGES TO CAPSULE FRONT CAP (SEE 5-802-06)	LKP			14.12.05
04	SPRING END (ITEM 16) ADDED TO CAPSULE ASSY	LKP	1421		06.09.06



ITEM	PART No.	DESCRIPTION	QTY
01	5-802/05	CAPSULE REAR CAP	1
02	5-658/04	CAPSULE BODY	1
03	5-802/06	CAPSULE FRONT CAP	1
04	3-00/178	'O' RING BS 224 NITRILE	1
05	3-00/186	'O' RING BS 123 NITRILE	2
06	3-00/187	'O' RING BS 316 NITRILE	2
07	5-387/09/01	GLAND NUT	1
08	3-00/001	'O' RING BS 008 EPDM	2
09	5-643/05/02	GLAND NUT SPACER	2
12	3-12/026	SS SPRING D22460	1
13	3-00/190	'O' RING BS 215 NITRILE	1
14	3-00/384	'O' RING BS 211 NITRILE	1
15	3-12/029	WAVE SPRING YC125-M4 S17	1
16	5-821/10	SPRING END	1

GENERAL TOLERANCES  
UNLESS OTHERWISE SPECIFIED:  
FABRICATION ±1 mm  
MACHINING ±0.25(0.010)  
SURFACE FINISH 3.2 micron

SCALE	NTS
DRAWN	LKP
CHECKED	
DATE	08-04-2003

DRAWN SIZE	A3
THIRD ANGLE PROJECTION	
MATERIAL	
HEAT TREATMENT	
FINISH	

ASSEMBLY	4 <sup>3</sup> / <sub>4</sub> " NON MAG. S.T.H. WITH WAVE SPRING
TITLE	CAPSULE ASSEMBLY
DRAWING No	5-802-07
PART No	5-802/07

This Drawing is released on the understanding that the Copyright holders proprietary rights therein are recognised and that it is solely for the information of the recipient and must not be copied in whole or in part or disclosed to any third party or used as the basis for manufacture or sale of apparatus without the prior written permission of R. C. Brewis.

**BREWIS ENGINEERING**  
Design and Manufacturing  
Handlemaker Road  
Marston Trading Estate  
Frome Somerset BA11 4RW  
Tel 01373 451387  
Fax 01373 452714